



FIRE
RESISTANT
GLASSES

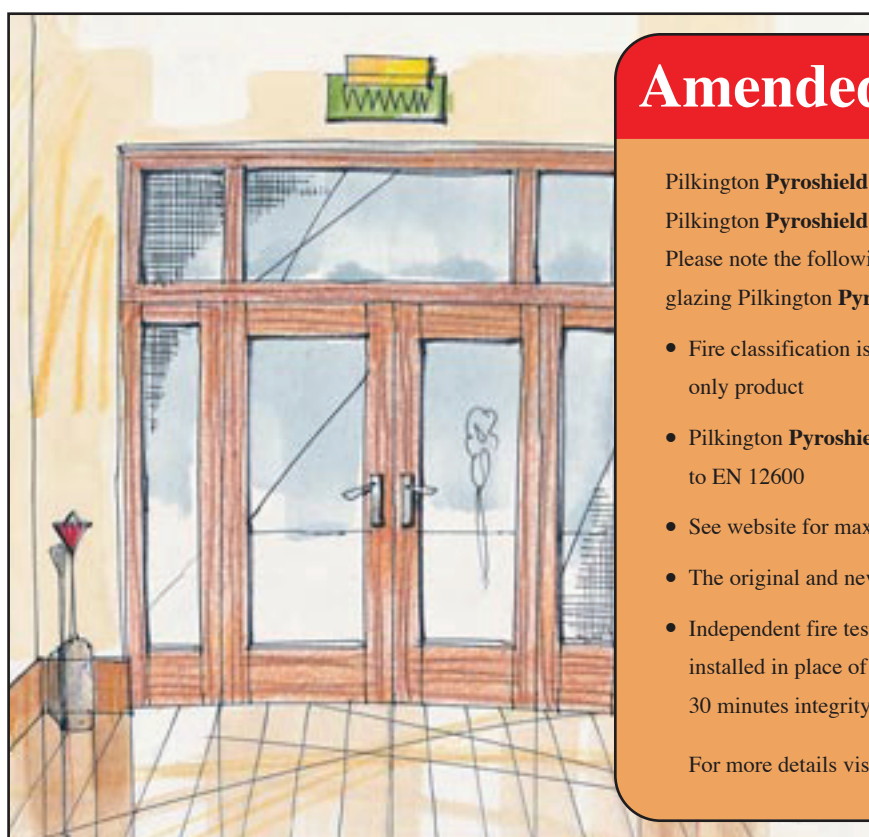
CI/SfB

Ro4 (Aq)

January 1997

Pilkington PYROSHIELD *Safety* Clear

Pilkington PYROSHIELD *Safety* Texture



Amended October 2009

Pilkington **Pyroshield™** has been superseded by Pilkington **Pyroshield™ 2** which has different characteristics. Please note the following important points when specifying or glazing Pilkington **Pyroshield™ 2**;

- Fire classification is only as a 30 minute integrity only product
- Pilkington **Pyroshield™ 2** Texture has no classification to EN 12600
- See website for maximum pane sizes for doors and screens
- The original and new products should not be mixed
- Independent fire test evidence confirms that it can be installed in place of Pilkington **Pyroshield™** to provide 30 minutes integrity only in this glazing assembly

For more details visit www.pilkington.co.uk/pyroshield2

FIRE TEST SUMMARY

Timber Doorset
30 minutes integrity

Test Reference FR 1448



PILKINGTON

Timber Doorset

30 minutes integrity

Test Reference:

FR1448

Test Station:

Timber Research and Development Association

Test Date:

3rd April 1995

Test Sponsor:

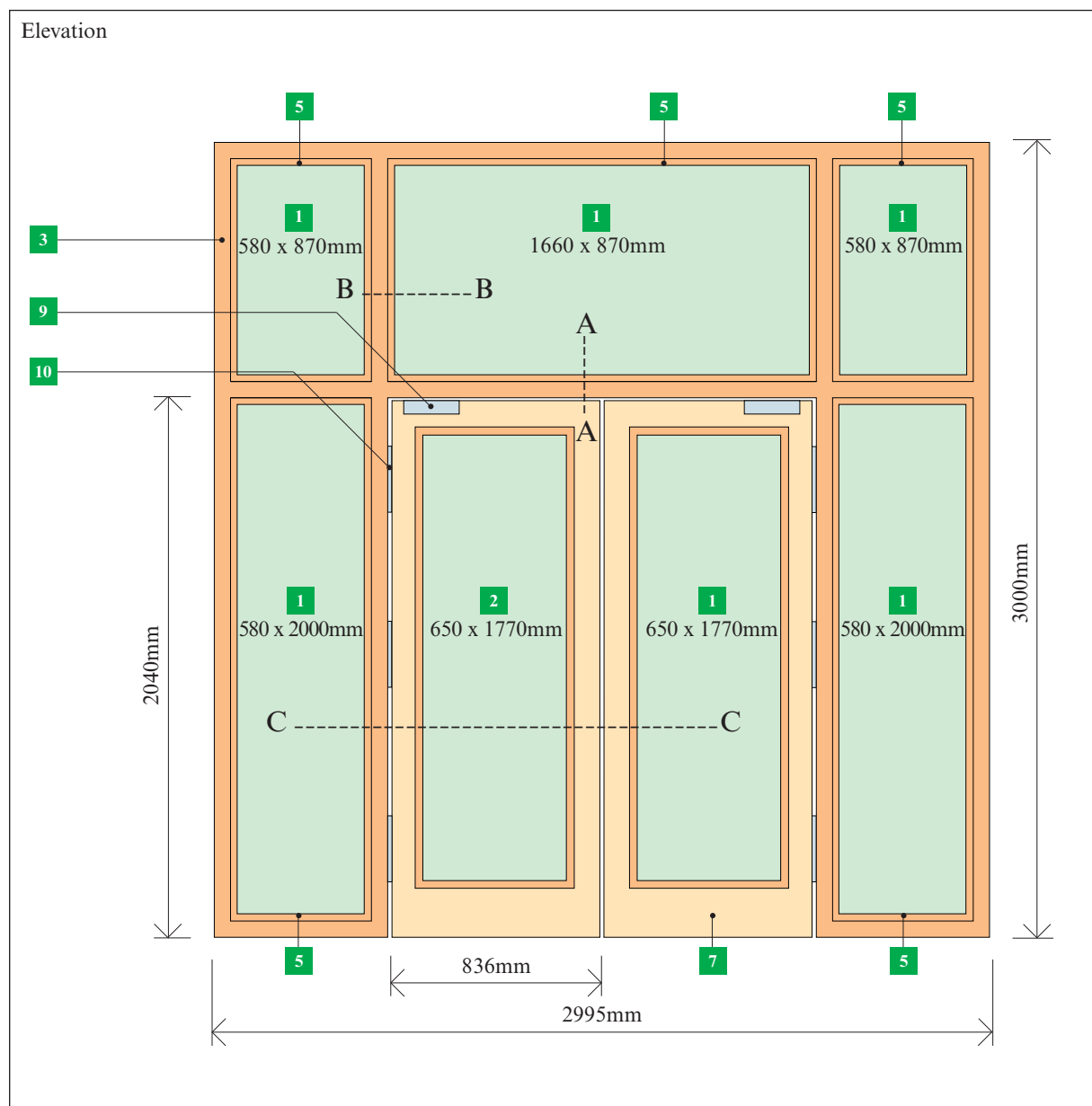
Pilkington United Kingdom Limited

Test Standard:

BS 476: Part 22: 1987

General description of the assembly

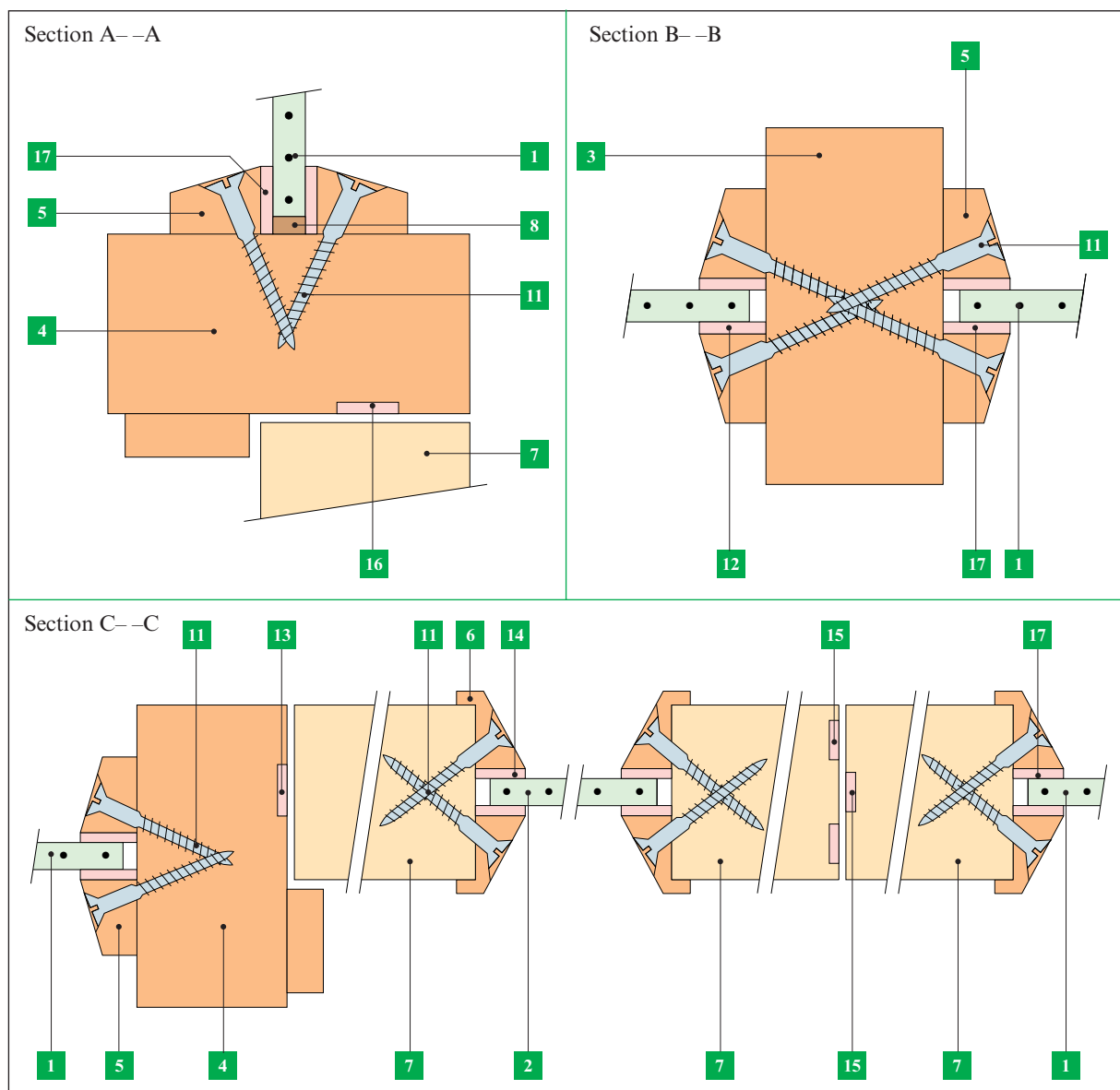
- Pilkington PYROSHIELD *Safety* Clear and Pilkington PYROSHIELD *Safety* Texture glasses
- Single action, unlatched double leaf timber doorset with side and over panels
- Hardwood frames and glazing beads
- Softwood doors
- Intumescent materials incorporated into the construction



Glazing dimensions are actual glass sizes

Key to figures

- 1** 6mm Pilkington PYROSHIELD *Safety* Clear glass
- 2** 7mm Pilkington PYROSHIELD *Safety* Texture glass
- 3** 80 x 44mm Utile hardwood frame (measured minimum density 650 kg/m³)
- 4** 80 x 44mm Utile hardwood frame plus 12mm planted stop
- 5** 20 x 15mm Utile hardwood glazing bead chamfered to 20°
- 6** 20 x 19mm Utile hardwood glazing beads with a 3mm bolection return
- 7** 81 x 44mm Douglas Fir softwood stiles (nominal density 530 kg/m³), with 81mm wide top rail and 165mm wide bottom rail
- 8** 5mm hardwood setting block
- 9** BRITON 2003/S overhead closer
- 10** 100 x 35mm steel butt hinges with intumescent pads behind each hinge flap
- 11** 38mm No.8 countersunk steel wood screws at nominal 150mm centres, approximately 45° to the vertical
- 12** 10 x 3mm MANN McGOWAN FABRICATIONS LTD. Pyroglazing 100P
- 13** 15 x 3mm MANN McGOWAN FABRICATIONS LTD. Pyroglazing 500P
- 14** SEALMASTER LTD. intumescent paste
- 15** 10 x 4mm MANN McGOWAN FABRICATIONS LTD. Pyroglazing 100P
- 16** 25 x 4mm MANN McGOWAN FABRICATIONS LTD. Pyroglazing 500P
- 17** 10 x 2mm DUFAYLITE DEVELOPMENTS LTD. Interdens intumescent seal



Scope

The results of this test only relate to the behaviour of the specimen of the element of construction under the particular conditions of the test. They are not intended to be the sole criteria for assessing the potential fire performance of the element in use nor do they reflect the actual behaviour in fires.

Pilkington PYROSHIELD Safety glass is classified as a Class C safety glass according to the impact performance requirements of BS 6206:1981, and has been tested extensively in accordance with the fire test requirements of BS 476: Part 22: 1987.

This publication gives a general description of the product and materials. It is the responsibility of the user of this document to ensure that their use is appropriate for any particular application and that such application complies with all relevant local and national legislation, standards, codes of practice and other requirements.

Pilkington United Kingdom Limited hereby disclaim all liability howsoever arising from any error in or omission from this publication and for all consequences of relying on it.

All products shown in CAPITALS are trademarks of the Pilkington Group.



PILKINGTON

Pilkington United Kingdom Limited
Prescot Road St Helens England WA10 3TT
Telephone 01744 692000 Fax 01744 613049