



© Pietro Savorelli

Pilkington **Optiwhite™**

Low-iron clear float glass



## The solution is clear

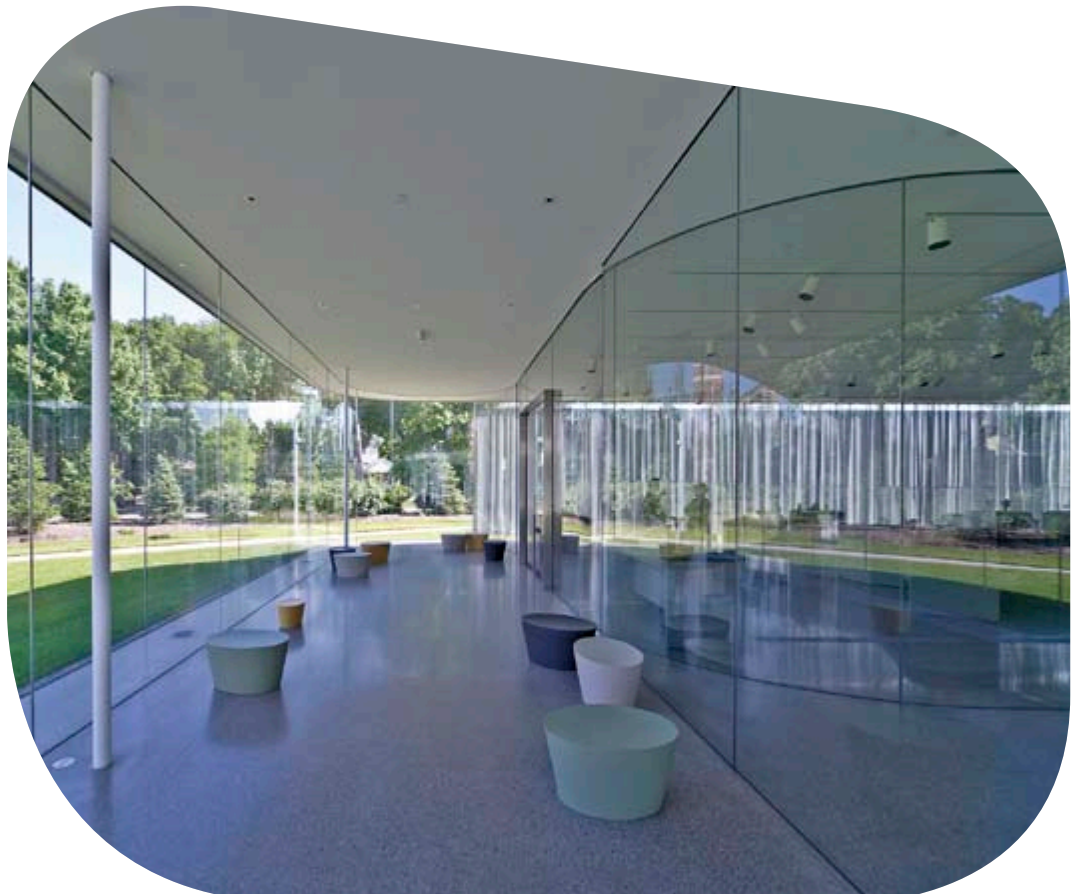
Today the use of glass in architecture and design is becoming more and more prevalent, and Pilkington **Optiwhite™** is at the very forefront of making it possible.

The reason for this is the sheer variety of benefits which Pilkington **Optiwhite™** can offer, making it an excellent choice for a wide range of applications. Pilkington **Optiwhite™** is an extra-clear, low-iron float glass; it is practically colourless, and the green cast inherent to other glasses is not present. It is therefore ideal for use where glass edges are visible or where a neutral colour is desired. As its light transmission is 1% and 6% higher than clear float glass in 3 mm and 15 mm thickness respectively, it is perfect for applications where transparency and purity of colour are desired.

Available in thicknesses of between 2 mm and 19 mm (the widest range on the market). It is also available as ultra-thin extra clear float glass Pilkington **Microwhite™** in a range of thicknesses 1.0 to 1.3 mm, suitable for a variety of applications.

Pilkington **Optiwhite™** provides increased design flexibility and, when combined with other Pilkington products, it can offer additional benefits such as thermal insulation or self-cleaning. It is used as a substrate in many functional glass products such as anti-reflective glass Pilkington **OptiView™** Ultra and Pilkington **OptiView™** OW, high performance solar control glass range Pilkington **Suncool™** OW, fire protection glass Pilkington **Pyrostop®** and many others. It also comes with all the reassurance of not only being a market-leading product in its own right, but of bearing the market-leading Pilkington name, and with the unrivalled support you would expect from our brand.

© Iwan Baan





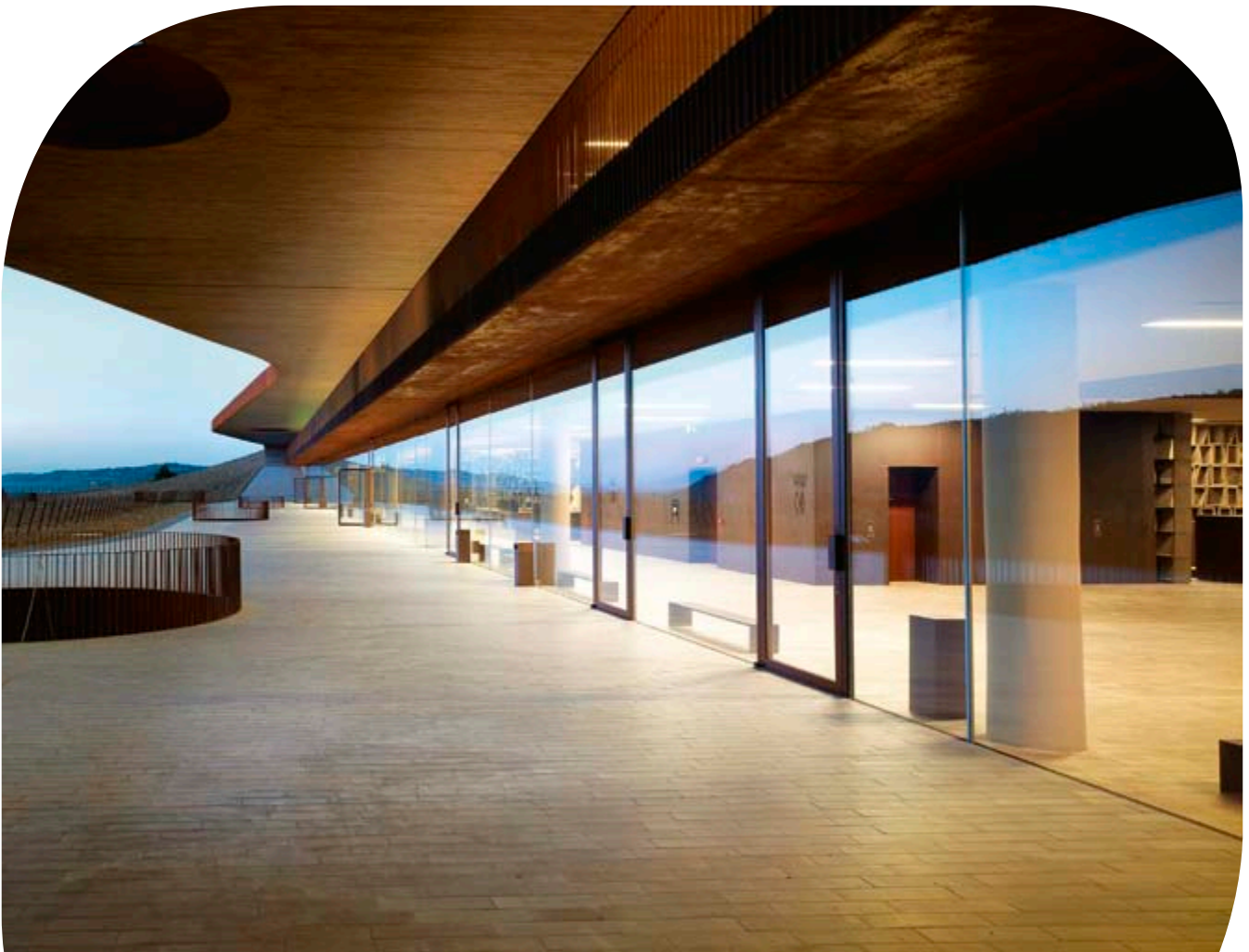
## Features and benefits

- High light transmission for outstanding visual clarity when an unrestricted view is required;
- Purity of colour with minimum colour cast when viewing through the glass, ensuring a truer representation of the designer's vision;
- High solar heat transmittance providing passive solar gain to allow more heat through, which can save costs on energy bills during the winter;
- Flexibility of application;
- Can be toughened or laminated for safety and security;
- Can be combined with other products from the Pilkington range to provide additional benefits.



Pilkington **Optifloat™** Clear

Pilkington **Optiwhite™**





## Exterior glazing

One of the most attractive features of Pilkington **Optiwhite™** is its ability to achieve greater brilliance and transparency, allowing a clear and truer representation of colours when viewed through the glass. These same qualities also allow for great interior daylight, which no doubt explains why Pilkington **Optiwhite™** is the product of choice for architects for buildings where transparency and brightness are of paramount importance.

Thanks to these and the many other benefits that Pilkington **Optiwhite™** brings to exterior applications, it is the perfect choice for façades. It can be combined with other products from the Pilkington range. For example, when combined with Pilkington **Suncool™** it decreases the risk of thermal breakage and reduces the need for toughening, whilst providing additional high performance solar control and low-emissivity. When used in shop fronts, it enhances true colours and allows maximum light transmission, even in thicker laminated combinations. In domestic windows, Pilkington **Optiwhite™** maximises passive solar gain to reduce the need for heating during cold sunny days.





## Features and benefits

- Allows highest transparency for truer colour representation, even in thicker laminated combinations;
- Provides high light transmission;
- Maximises passive solar gain on cold sunny days;
- Made to exceptional, consistent quality and performance;
- Can be toughened or laminated;
- Can be combined with other products from the Pilkington range to provide additional benefits.

© Vitrine Systems Ltd



© Bertrand Delapierre





## Interior glazing

Laminated glass provides safety and security by marrying together multiple layers of standard float glass and polyvinyl butyral (PVB) interlayers. However, this process also exaggerates any tint of colour inherent to the product. This is much less noticeable when using Pilkington **Optiwhite™** as the substrate for laminated glass.

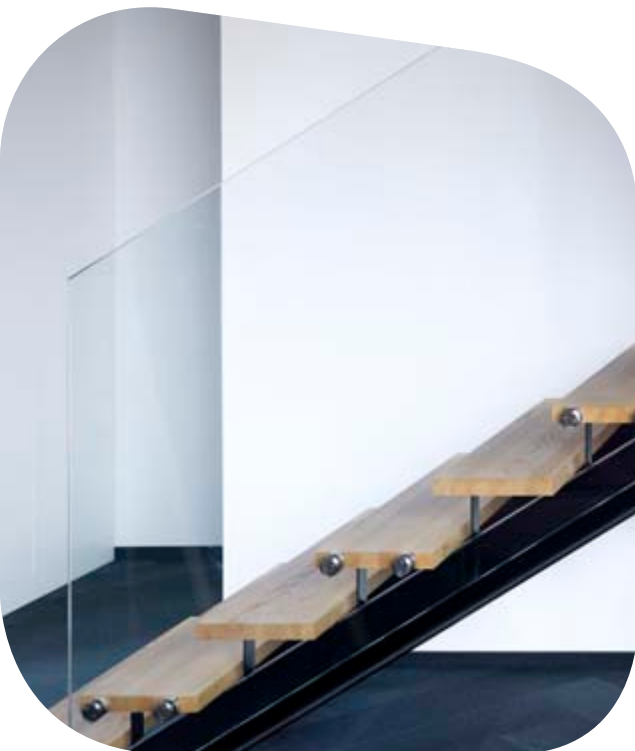
The resulting product is free from inherent darkening conventionally associated with laminated glass incorporating the thicker clear float glass used for enhanced safety and security, making Pilkington **Optiwhite™** the ideal alternative solution for balustrades, balconies, doors, partitions and stairs.





## Features and benefits

- Ensures a more natural, brighter view;
- Improves aesthetics of laminated glass;
- Made to exceptional, consistent quality and performance;
- Can be toughened or laminated;
- Can be combined with other products from the Pilkington range to provide additional benefits.





## Furniture and other applications

As designers are finding, Pilkington **Optiwhite™** is an ideal solution for applications where glass is used as a design feature, such as glass tables. The same is true where glass edges are purposely exposed – for example, shelving and shower screens – where its clarity enhances the entire appearance of the furniture.

In applications such as display cabinets, the high light transmission of Pilkington **Optiwhite™** allows for a truer representation of the potentially high-value products inside. Its inherent ability to make colours appear brighter also means that Pilkington **Optiwhite™** provides an exceptional base glass for tiles, splash-backs and furniture doors, and gives more accurate colour definition when used as a mirror base.





There are many more applications for which Pilkington **Optiwhite™** delivers an outstanding solution, and along with every other Pilkington product we are constantly looking for ways to further improve its performance to better meet the needs of designers and architects worldwide.

### Features and benefits

- Allows highest transparency for truer colour representation, even in thicker laminated combinations;
- Provides less greenish colour of the glass edges;
- Provides high light transmittance;
- Made to exceptional, consistent quality and performance;
- Can be toughened or laminated.





© Agnora



© Agnora

NSG Group can supply Super Jumbo glass plates up to 20 m in length. The largest glazing dimension for the architecture currently available on the European market.

One of the key trends in imposing modern architecture is the use of oversized glass. Well-known projects with exceptionally tall glass façades, made of panes up to 20 meters long, already exist.

As well as impressing through minimalistic design, these oversized panes are chosen specifically for their ability to provide extreme transparency – achieved due to an extra clear glass with low-iron content plus minimal use of framing and fasteners.

By supplying Super Jumbo extra clear glass plates of up to 20 m in length, NSG Group helps architects and engineers to realise their customers' concepts.

These oversized glass plates offer the largest architectural glazing dimensions currently available on the European market. In addition, and upon request, a width more than 3.21 m can be considered for supply.

The photography illustrates some examples of oversized glass projects.







Pilkington **Optiwhite™** is often used for curved glass applications.

The outer façade of the renovated La Samaritaine department store in Paris, designed by SANAA in co-operation with SRA Architects, has an irregular undulating form, and comprises 343 curved glass panels measuring 2.7 by 3.5 meters. The panels have been made of laminated extra-clear Pilkington **Optiwhite™** custom-bent by Cricursa and installed by glass façade specialists Frener & Reifer.



This publication provides only a general description of the products. Further, more detailed, information may be obtained from your local supplier of Pilkington products. It is the responsibility of the user to ensure that the use of these products is appropriate for any particular application and that such use complies with all relevant legislation, standards, codes of practice and other requirements. To the fullest extent permitted by applicable laws, Nippon Sheet Glass Co. Ltd. and its subsidiary companies disclaim all liability for any error in or omission from this publication and for all consequences of relying on it. Pilkington, "Optiwhite" and "Suncool" are trademarks owned by Nippon Sheet Glass Co. Ltd, or a subsidiary thereof.



CE marking confirms that a product complies with its relevant harmonised European Norm.  
The Declaration of Performance for each product, including declared values, can be found at [www.pilkington.com/CE](http://www.pilkington.com/CE)



**Pilkington Group Limited**  
European Technical Centre  
Hall Lane – Lathom Nr Ormskirk L40 5UF – United Kingdom  
[marketing.communications@nsg.com](mailto:marketing.communications@nsg.com)  
**[www.pilkington.com](http://www.pilkington.com)**

February 2020