

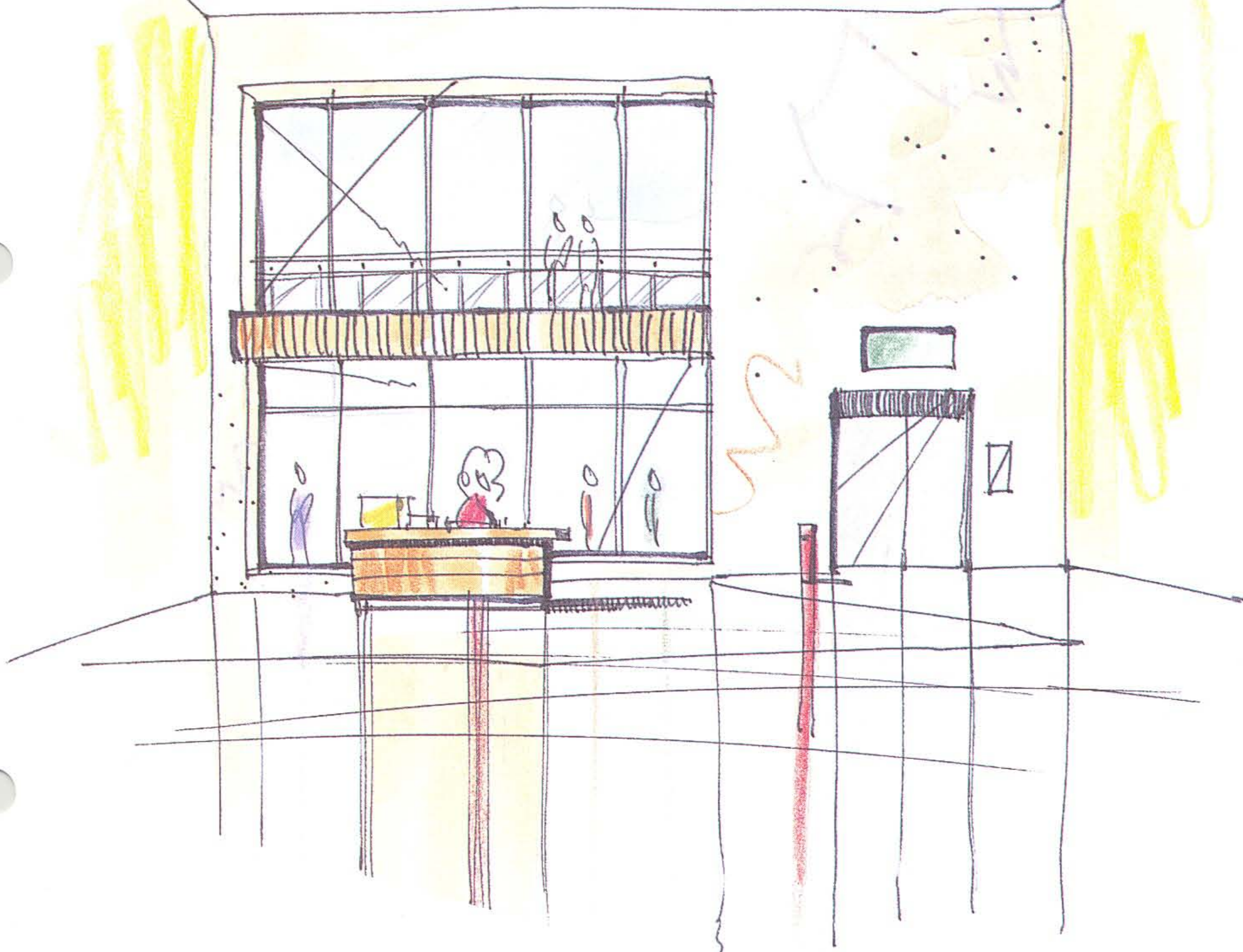


# Pilkington **Pyrostop**<sup>TM</sup>

## FIRE TEST SUMMARY

Multi-pane Timber Screen - 60 minutes integrity  
& 30 minutes insulation

REFERENCE: C82781



PILKINGTON

# Pilkington **Pyrostop**<sup>™</sup> in Multi-pane Timber Screen

60 minutes integrity & 30 minutes insulation

A clear, fully insulating fire resistant glass providing the highest levels of fire and impact protection.

ASSESSMENT REFERENCE:  
C82781

TEST STATION:  
Warrington Fire Research Centre

DATE:  
14th January 1998

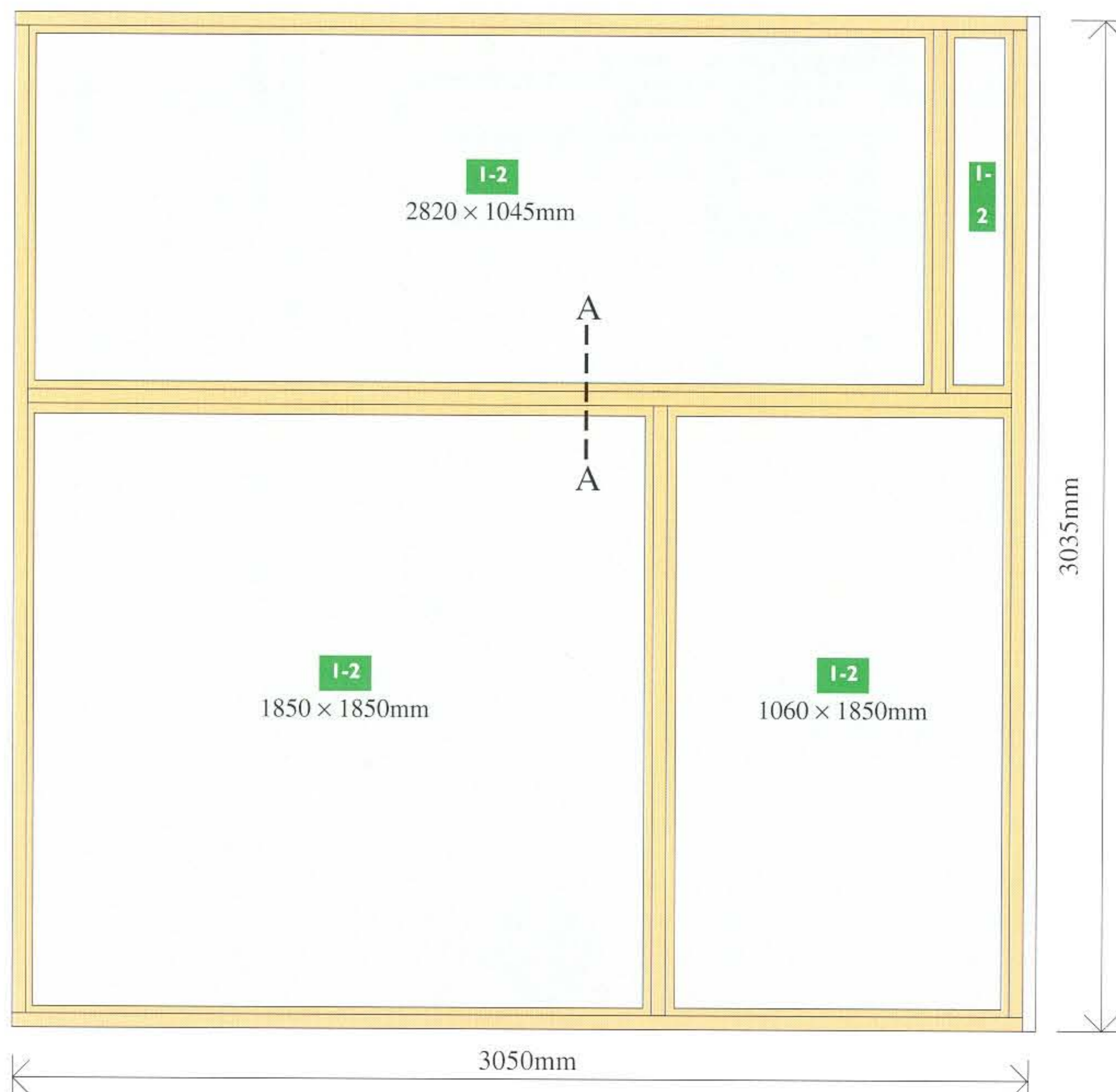
SPONSOR:  
Pilkington United Kingdom Limited

TEST STANDARD:  
BS 476: Part 22: 1987

## GENERAL DESCRIPTION OF THE ASSEMBLY

- 15mm Pilkington **Pyrostop** or 18mm Pilkington **Pyrostop**
- Single glazing, or double glazed with non fire rated glass
- Multi-pane hardwood screen
- Hardwood glazing beads
- Intumescent material incorporated into the construction

## Elevation

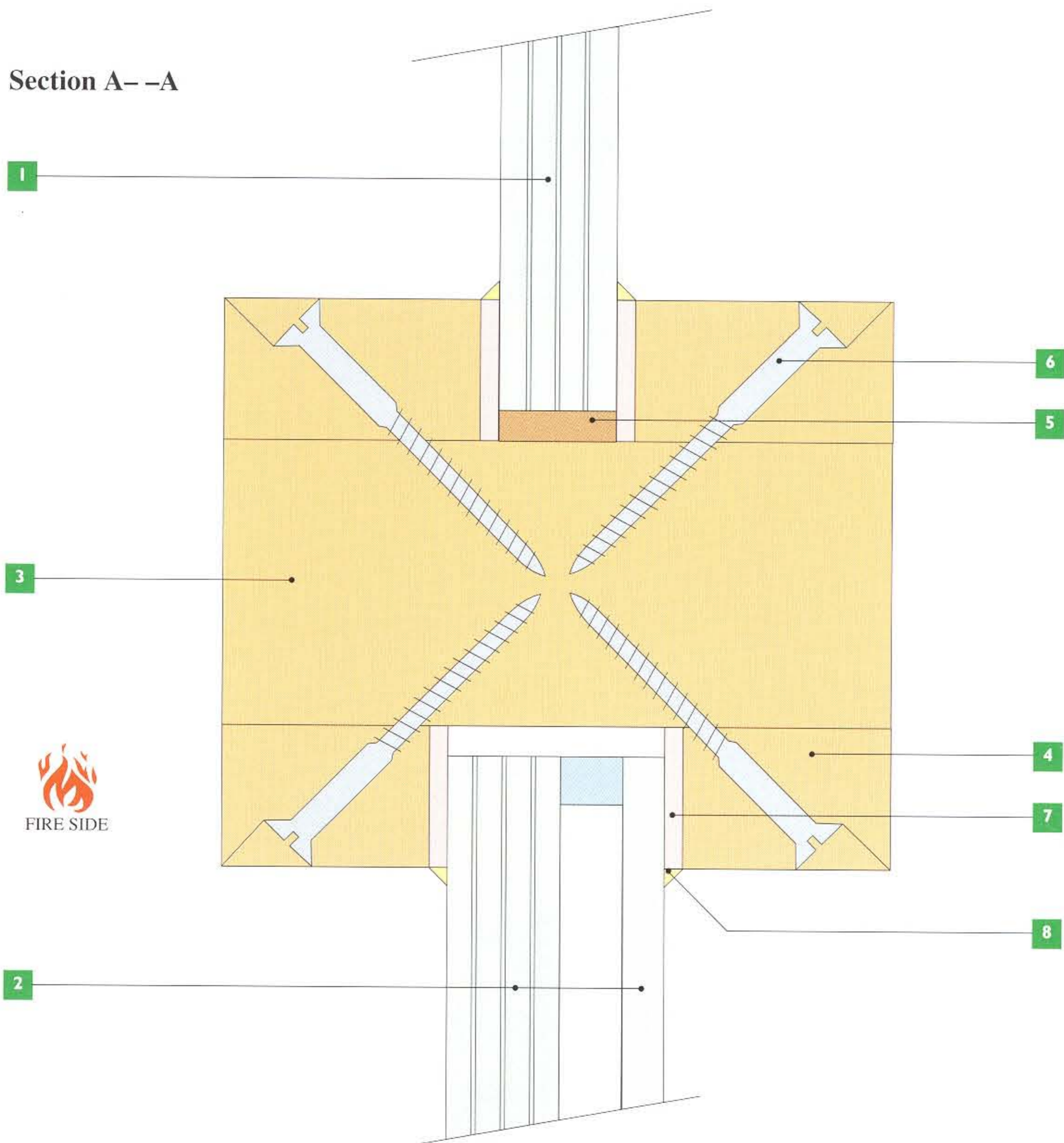


*Glass dimensions are actual sizes. Maximum pane dimensions dependent upon aspect ratio.*

# Key to figures

- 1** 15mm Pilkington **Pyrostop** or 18mm Pilkington **Pyrostop**
- 2** Double glazing unit (Pilkington **Pyrostop**/8mm cavity/ 6mm secondary pane)
- 3** 95 × 40mm hardwood frame (Brazilian mahogany minimum density 570 kg/m<sup>3</sup>) Dimension varied to suit thickness of single glazing or double glazed unit and dimension of glazing beads.
- 4** 30 × 25mm hardwood glazing beads
- 5** 5mm thick hardwood setting block
- 6** 50mm long No. 8 or No. 10 steel screws at nominal 200mm centres. Screw fixings splayed so that screws extend at least 40mm into framing members.
- 7** 20 × 3mm proprietary glazing medium, either:  
CARBORUNDUM RESISTANT MATERIALS LTD.  
Fibrefrac ceramic tape  
DUFAYLITE DEVELOPMENTS LTD.  
Interdens intumescent seal  
MANN MCGOWAN FABRICATIONS LTD.  
Pyroglaze 500P
- 8** Mastic pointing, either:  
Intumescent mastic, or  
ADSHEAD RATCLIFFE & Co. LTD.  
Arbo 1081 silicone mastic  
GE SILICONES GE1200 silicone mastic

## Section A--A



## Scope

The results of this assessment relate only to the anticipated behaviour of the specimen of the element of construction under the particular conditions of the test. They are not intended to be the sole criteria for assessing the potential fire performance of the element in use nor do they reflect the actual behaviour in fires.

15mm Pilkington **Pyrostop** glass is classified as a Class B safety glass, 18mm Pilkington **Pyrostop** glass is classified as a Class A safety glass according to the impact performance requirements of BS 6206: 1981, and have been tested extensively in accordance with the fire test requirements of BS 476: Part 22: 1987.

This publication gives a general description of the product and materials. It is the responsibility of the user to ensure that their use is appropriate for any particular application and that such application complies with all relevant local and national legislation, standards, codes of practice and other requirements.

Pilkington United Kingdom Limited hereby disclaim all liability howsoever arising from any error in or omission from this publication and for all consequences of relying on it.

Pilkington **Pyrostop**<sup>™</sup> is a trade mark of the Pilkington Group.

For technical advice please contact the numbers below.



# PILKINGTON

**Pilkington United Kingdom Limited**  
Prescot Road St Helens England WA10 3TT  
Telephone 01744 69 2000 Fax 01744 613049