



Scope

The results of this test relate only to the behaviour of the specimen of the element of construction under the particular conditions of the test. They are not intended to be the sole criteria for assessing the potential fire performance of the element in use nor do they reflect the actual behaviour in fires.

23mm Pilkington **Pyrostop™** is classified as a Class A safety glass according to the impact performance requirements of BS 6206: 1981, and has been tested in accordance with the fire test requirements of BS 476: Part 22: 1987, and BS EN 1364-1:1999.

This publication gives a general description of the product and materials. It is the responsibility of the user to ensure that their use is appropriate for any particular application and that such application complies with all relevant local and national legislation, standards, codes of practice and other requirements.

Pilkington United Kingdom Limited hereby disclaim all liability howsoever arising from any error in or omission from this publication and for all consequences of relying on it.

Pilkington **Pyrostop™** is a trade mark of the Pilkington Group.

For technical advice please contact the numbers below.



PILKINGTON

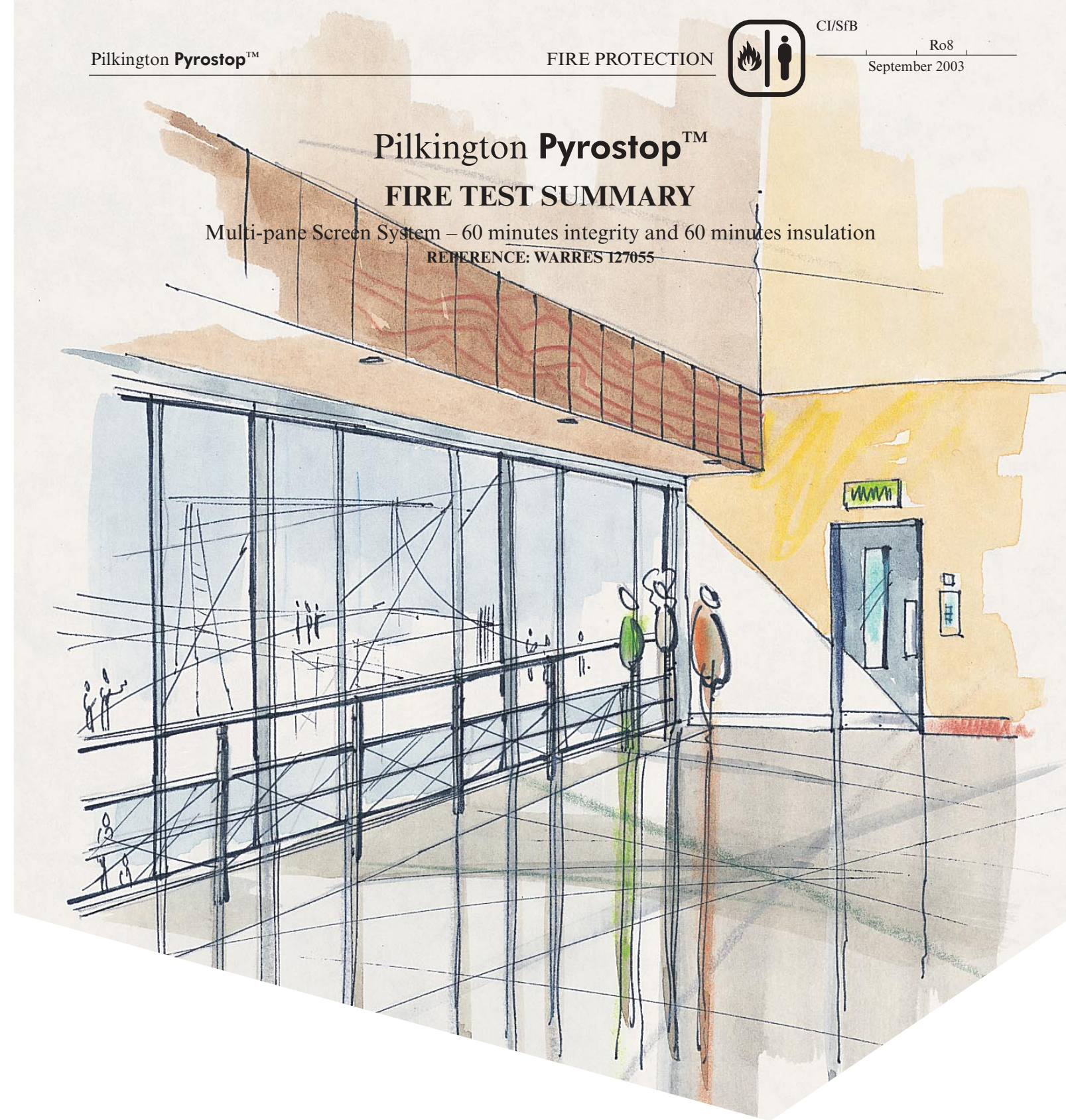
Pilkington United Kingdom Limited
 Prescott Road St Helens England WA10 3TT
 Telephone 01744 692000 Fax 01744 692880
 ukbranches@pilkington.com
 www.pilkington.com

Pilkington Pyrostop™

FIRE TEST SUMMARY

Multi-pane Screen System – 60 minutes integrity and 60 minutes insulation

REFERENCE: WARRES 127055



PILKINGTON



Pilkington Pyrostop™ in Multi-pane Screen System (with slender jointing profile)
60 minutes integrity and 60 minutes insulation

A clear fully insulating fire-resistant glass providing the highest levels of fire and impact protection.

TEST REFERENCE:
WARRES 127055

TEST STATION:
Warrington Fire Research Centre

TEST DATE:
7th November 2002

TEST SPONSOR:
T & W Ide Fire Products Limited

TEST STANDARD:
BS EN 1364-1: 1999

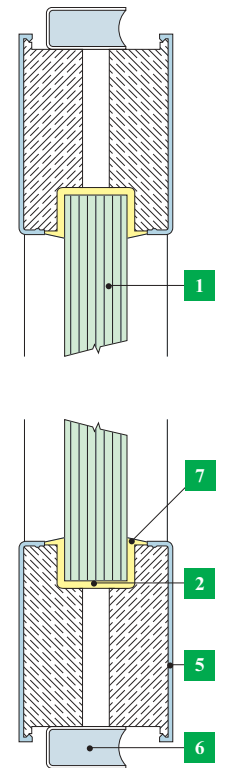
GENERAL DESCRIPTION OF THE ASSEMBLY

- 23mm Pilkington Pyrostop™
- T & W Ide Fire Products Ltd Firesecur AP insulated glazed screen/partition
- Top and bottom rail
- Slender jointing profile

Key to figures

- 1 23mm Pilkington Pyrostop™
- 2 2-5mm hardwood setting block
- 3 35 x 14 x 1.6mm stainless steel mullion capping
- 4 20 x 14 x 1.6mm stainless steel mullion capping
- 5 76mm deep top and bottom rail with insulation
- 6 Insulation
- 7 Lorient Polyproducts Ltd. system 36/23 extruded rubber channel

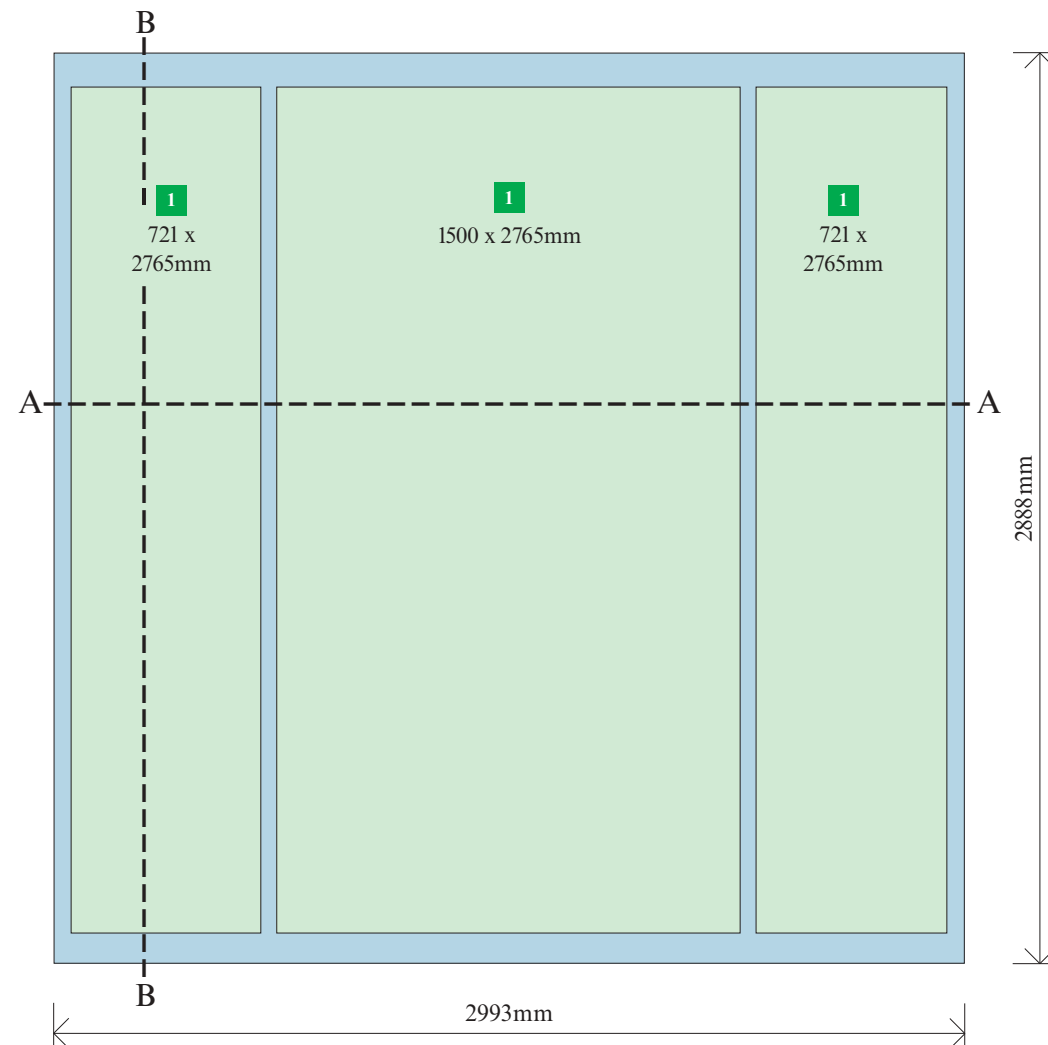
Section B -- B



Not to scale

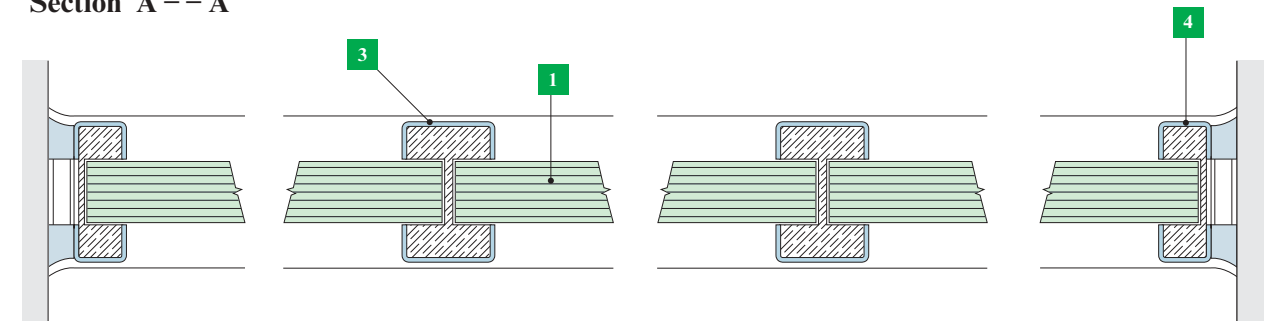
Elevation

System supplied and fixed by T&W Ide Fire Products Limited



Glass dimensions are actual sizes

Section A -- A



For reasons of confidentiality, some of the proprietary framing details have been omitted. For more information on the Firesecur AP insulated glazed screen/partition, please contact T&W Ide Fire Products Ltd (Tel: 020 7790 2333 Fax: 020 7790 0201 email: fire@twigroup.co.uk).