

May/June 2014

Topics of this Newsletter are:

- **Safety and Design**

- Some like it white – Pilkington **Profilit™** OW low iron glass at the new town hall of Rochdale in North-West of England

- **Profiled Glass with System**

- New: Pilkington **Profilit™** dilatation joint profiles #810 D and #811 D for thermally broken Pilkington **Profilit™** frames #810 und #811

- **Facelift – the Revised Pilkington Profilit™ Brochures**

- **The Easiest Way to** Pilkington **Profilit™**

www.profilit.com



- **Safety and Design**

- Some like it white – Pilkington **Profilit™** OW low iron glass at the new town hall of Rochdale in North-West of England

The new municipality offices building of Rochdale forms an integral part of the city's development project for the centre of the town.

The new town hall will not only bring together 2000 council staff from more than 30 existing buildings, it will also house extensive office and conference spaces, a public library and tourist information area.



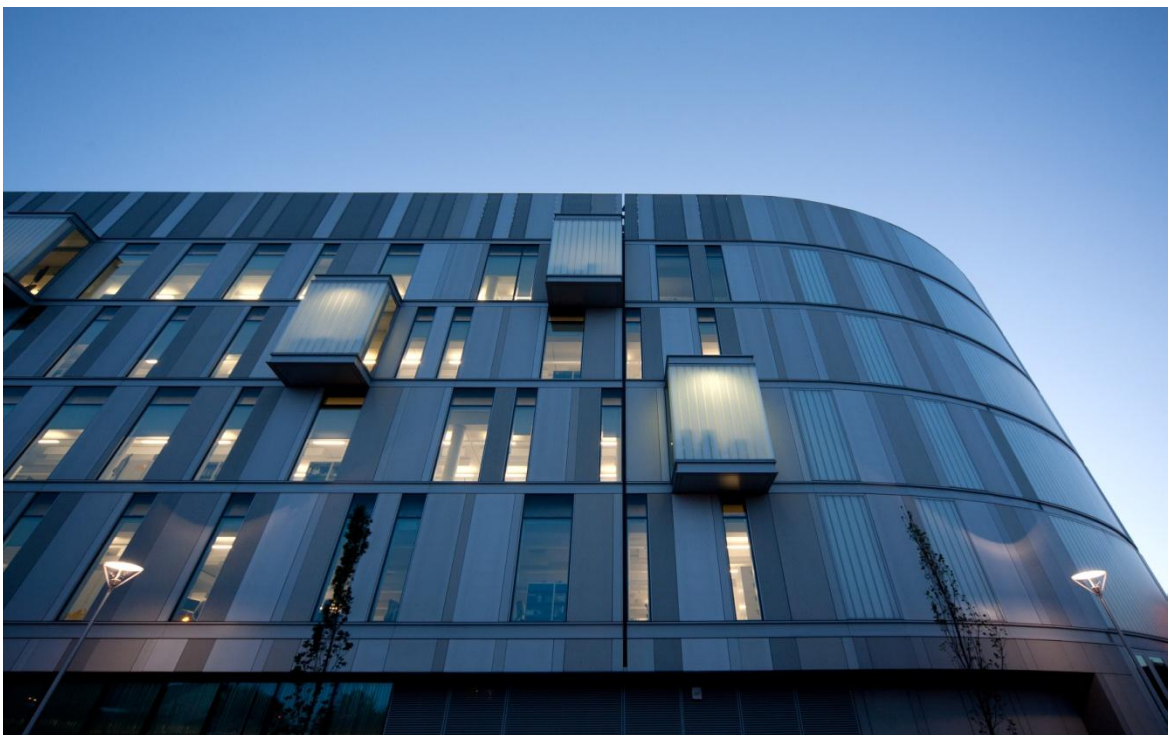
When designing the imposing authority building the architect FaulknerBrowns Architects took advantage of the wide range of Pilkington **Profilit™** OW low iron glass products for both the exterior building envelope as well as for the interior design.

All in all approx. 3500 m² of thermally toughened and heat soaked Pilkington **Profilit™** T-H OW have been installed with the Pilkington **Profilit™** design variations „Macro“, „Slim Line“ and „Clear“.

Across the south facing elevation, Pilkington **Profilit™** T-H OW planks have been assembled as a Brise Soleil system, deflecting direct sunlight and reducing solar gain. The system consists of partly drilled, partly clamped thermally toughened and heat soaked panels assembled using bespoke bolt and plate connections.



In other facade elevations the products have been used in traditional warm facade construction partly combined with the Pilkington **Profilit™** Opal design and by using translucent insulation material to further improve physical properties:



In order to transfer the design aspect of Pilkington **Profilit™** OW low iron glass also the inside of the building generous interior partition walls have been built up with the product as well:



Project: Number One Riverside, Rochdale

General contractor: Sir Robert McAlpine

Facade construction: Permasteelisa

Architect: FaulknerBrowns Architects

Our customer: Reglit Glass Architecture

- **Profiled Glass with System**

- New: Pilkington **Profilit**™ dilatation joint profiles #810 D and #811 D for thermally broken Pilkington **Profilit**™ frames #810 und #811

For the thermally broken Pilkington **Profilit**™ system components #810 (top/side profile) and #811 respectively 811/xx (bottom profile with or without integrated window sill) the corresponding dilatation joint profiles are available now as well.

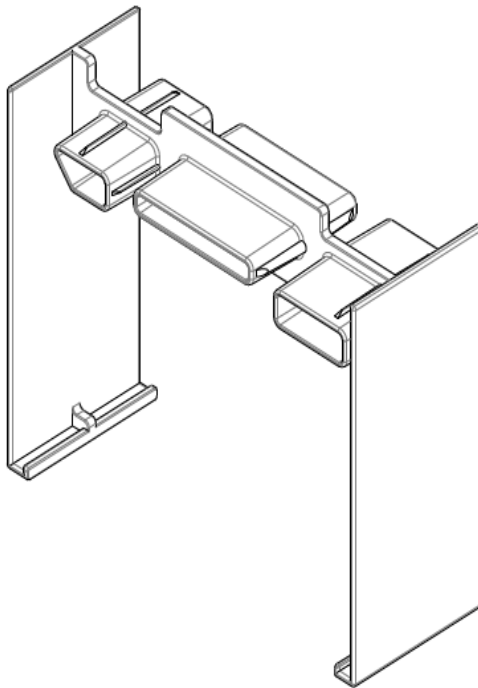


Figure 1: Pilkington **Profilit**™ profile # 810 D

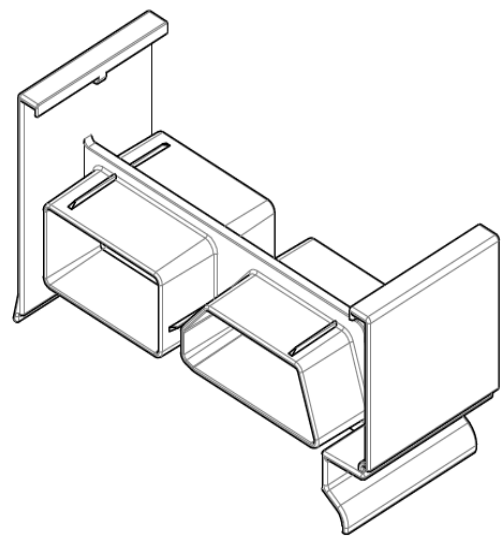


Figure 2: Pilkington **Profilit**™ profile # 811 D

The new Pilkington **Profilit**™ system components make frame assembly easier especially with regard to flush fixing and proper sealing of the system.

An additional advantage is that the dilatation profile # 811 D fits both, the thermally broken bottom frame # 811 without window sill as well as the corresponding variations with integrated or separate Pilkington **Profilit**™ window sill.

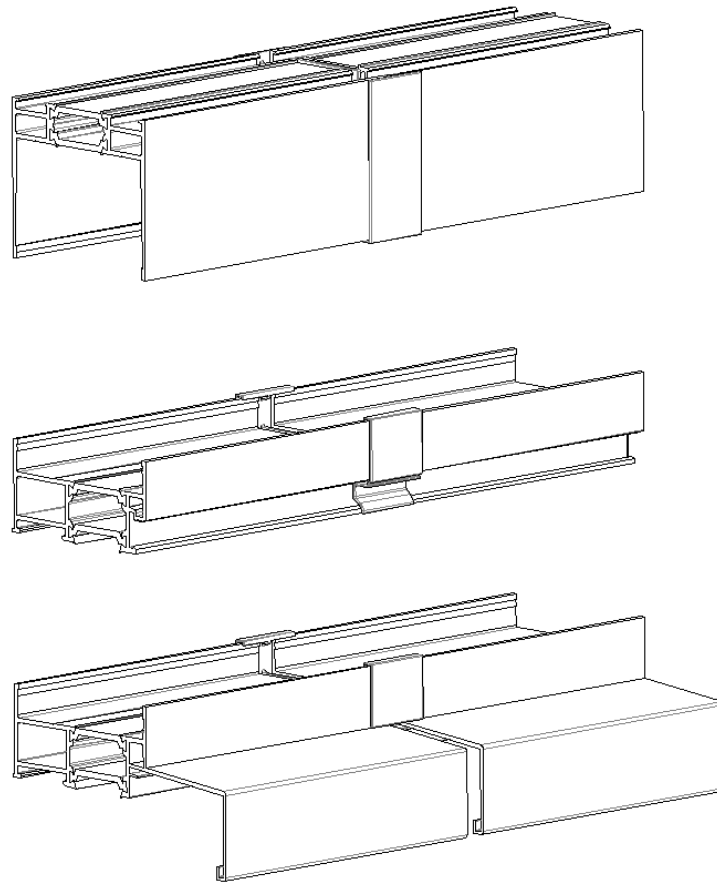


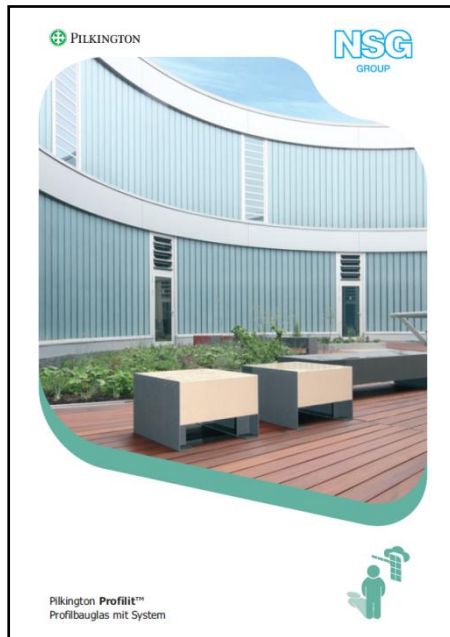
Figure 3: Application of profiles #810 D and #811 D

For the time being the new dilatation joint profiles will be available in a dyed throughout version in light grey color tone. Upon request a material quality fit for lacquering can be inquired as well.

Further information about the application of the new system components as well as price information and packing units can be provided upon request.

- **Facelift – the Revised Pilkington Profilit™ Brochures**

The Pilkington **Profilit™** brochures „Profiled Glass with System“ and „Product Examples“ have recently been revised and are now also available as download on the Pilkington **Profilit™** website.



The brochure „Product Examples“ now also includes the new Pilkington **Profilit™** E1 design.

Upon request we will be pleased to provide you with the corresponding print version as well.

In case of any question regarding the topics of this newsletter please kindly contact our Application Technology Department.

With best regards

Bauglasindustrie GmbH
Hüttenstraße 33
D - 66839 Schmelz/Saar
Tel. +49 (0) 6887 303 0
Fax +49 (0) 6887 303 45