



Pilkington **Activ**™

Product description

Pilkington **Activ**™ is a dual-action self-cleaning glass. The unique dual action of the Pilkington **Activ**™ coating uses the forces of nature to help keep the glass free from dirt, giving not only the practical benefit of less cleaning, but also clearer, better-looking windows. Once exposed to daylight, the coating chemically reacts in two ways. First, it breaks down any organic dirt deposits and second, rainwater 'sheets' down the glass to wash any loosened dirt away.

See how it works:



Glazing with Pilkington **Activ**™ stays cleaner for longer and this pays off for both homeowners and operators of commercial buildings.

Pilkington **Activ**™ keeps its self-cleaning effect over the entire lifetime of the glass. The coating also works on cloudy days as well as during the night. During dry spells the glass

can be cleaned by simply hosing it down.

Pilkington **Activ**™ makes roof windows and conservatories easier to clean, saves water and time and protects the environment. Additionally, the Pilkington **Activ**™ coating is able to break down nitrogen oxides, also known as NO_x. On a façade of 2500 m², Pilkington **Activ**™ can absorb as much NO_x as emitted by up to 20 cars*.

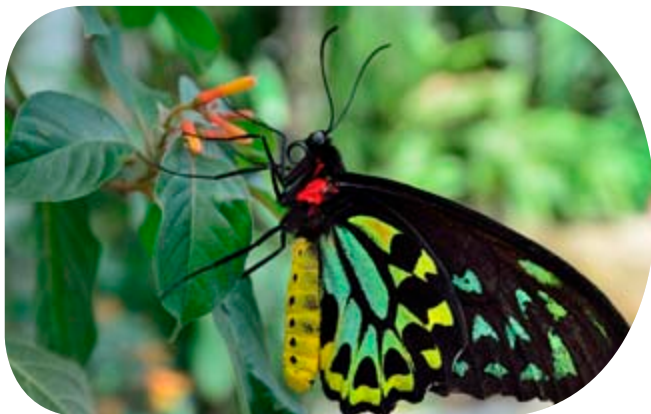
* depending on the type of engine, travelling an annual distance of 14 000 km per year.



Pilkington **Activ**™ - the "green" product

- Helps to reduce nitrogen oxide as confirmed by Fraunhofer Institute.
- The self-cleaning coating lasts the lifetime of the glass.
- Climate-friendly thanks to photocatalytically active surface.
- Environmentally friendly and sustainable.
- Reduces cleaning and maintenance costs.
- Can be combined with other Pilkington products to maximize comfort (e.g. Pilkington **Suncool**™).

Please contact us at assistenza@nsg.com and follow our LinkedIn channel "Pilkington Italia" for exciting news. Simply scan the QR Code:



To the fullest extent permitted by applicable laws, Nippon Sheet Glass Co. Ltd. and its subsidiary companies disclaim all liability for any error in or omission from this publication and for all consequences of relying on it.



CE marking confirms that a product complies with its relevant harmonised European Norm. The CE marking label for each product, including declared values, can be found at www.pilkington.com/CE